

Population Health Dashboards



An Overview

Population Health Dashboard

- Definition: a dashboard in the analytics tab that gives you lots of information about a group of students.
- Access: Select the Analytics icon on the left side of your screen and choose “Population Health Dashboard” in the Population Health Analytics box:



Analytics

Population Health Analytics

Assess the health of selected student populations and identify intervention opportunities using key academic performance metrics like GPA and credit completion.

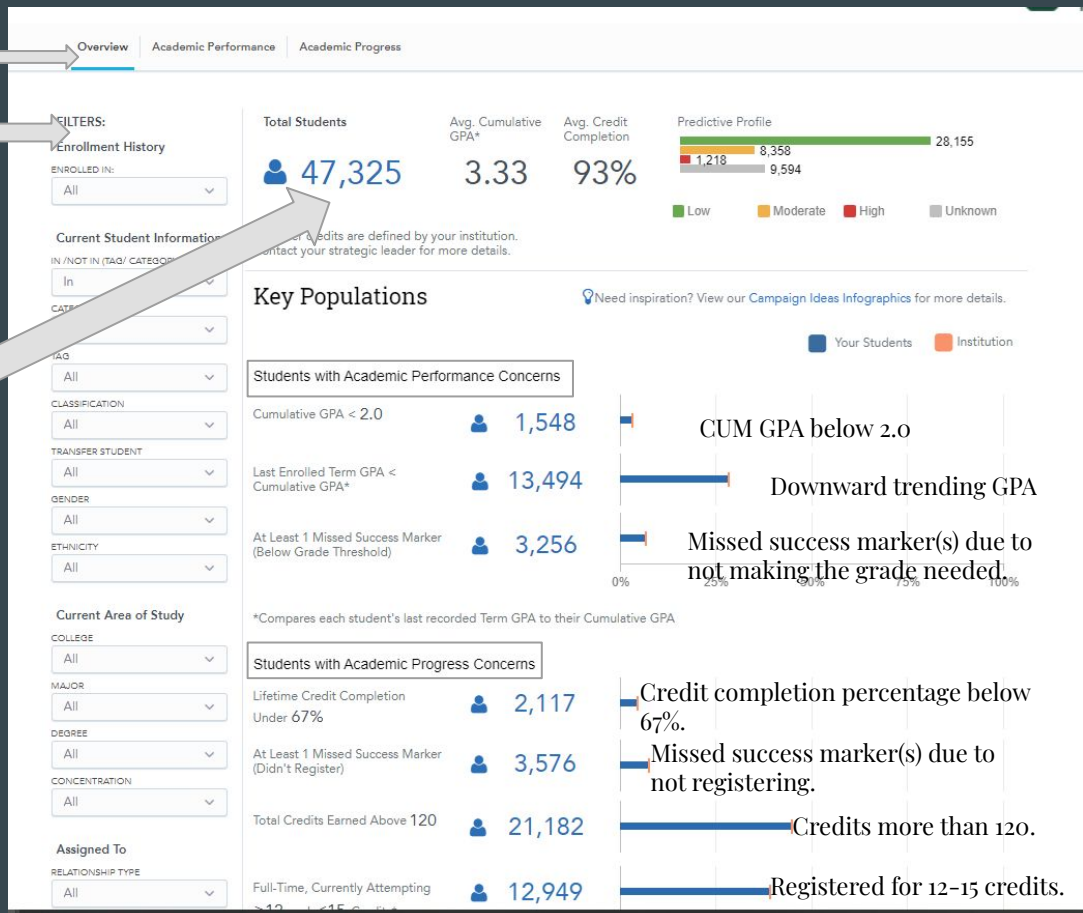
[Population Health Dashboard](#)

[Intervention Effectiveness](#)

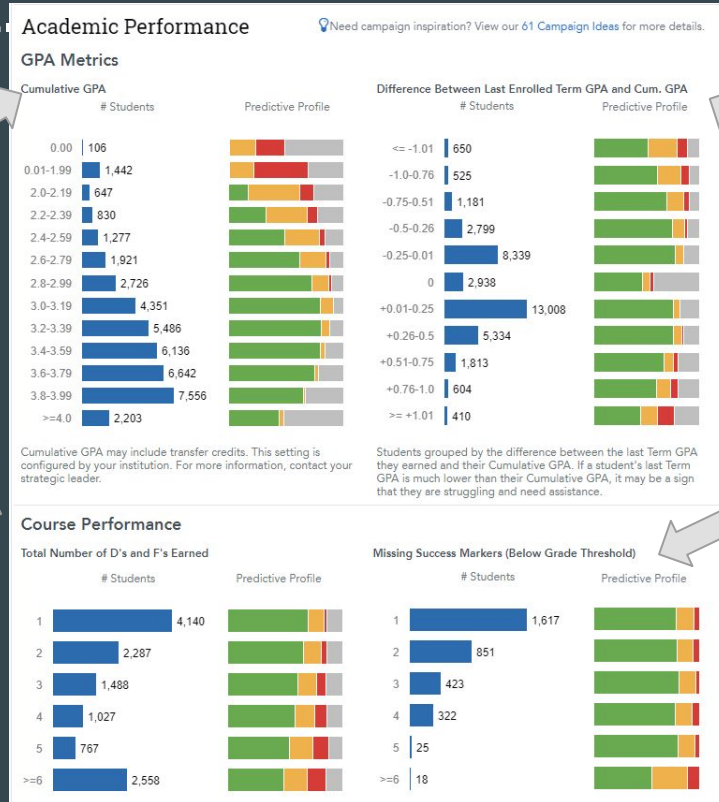
Overview Tab

The filters on the left side will enable you to hone in on your specific student population.

Any of the blue numbers can be selected to create a report of all of the students within that group. This report is exportable in a number of formats.



Academic Performance Tab: clicking on the numbers will create an exportable report.



Cumulative GPA ranges

Downward trending GPA.

of Ds and Fs

Missing Success Markers due to grade below threshold.

Academic Progress

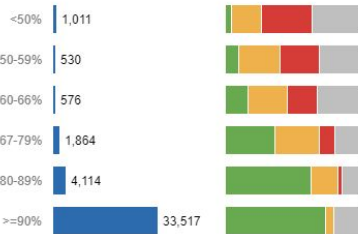
These will include drops at Baylor.

Academic Progress

Need campaign inspiration? View our 61 Campaign Ideas for more details.

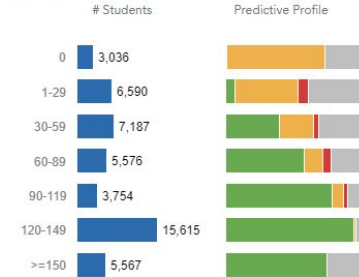
Credits

Credit Completion Percentages



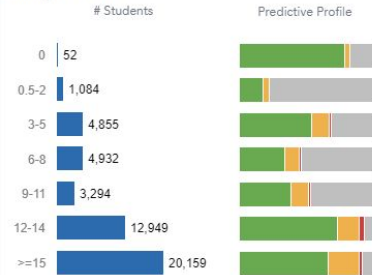
Credits attempted and earned at other institutions are excluded.

Total Earned Credits



Students grouped by their number of lifetime earned credits. This may or may not include credits from other institutions; this setting is configured by your institution.

Attempted Credits

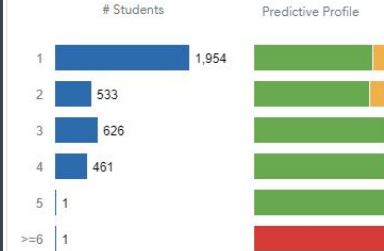


Students grouped by the credits they are currently attempting at your institution.

This section reviews different data points related to credits completed, earned, and attempted.

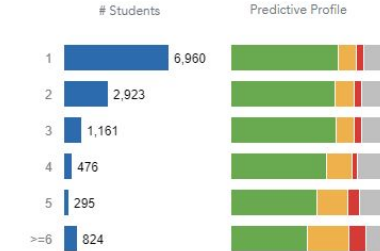
Course Progress

Missing Success Markers (Didn't Register)



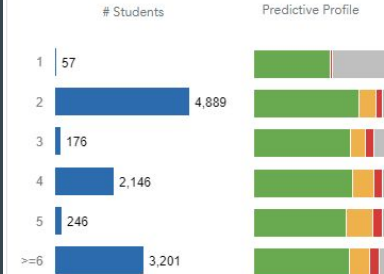
Students grouped by the number of current Success Markers they've missed because they did not register for the course in the recommended timeframe.

Number of Withdrawals



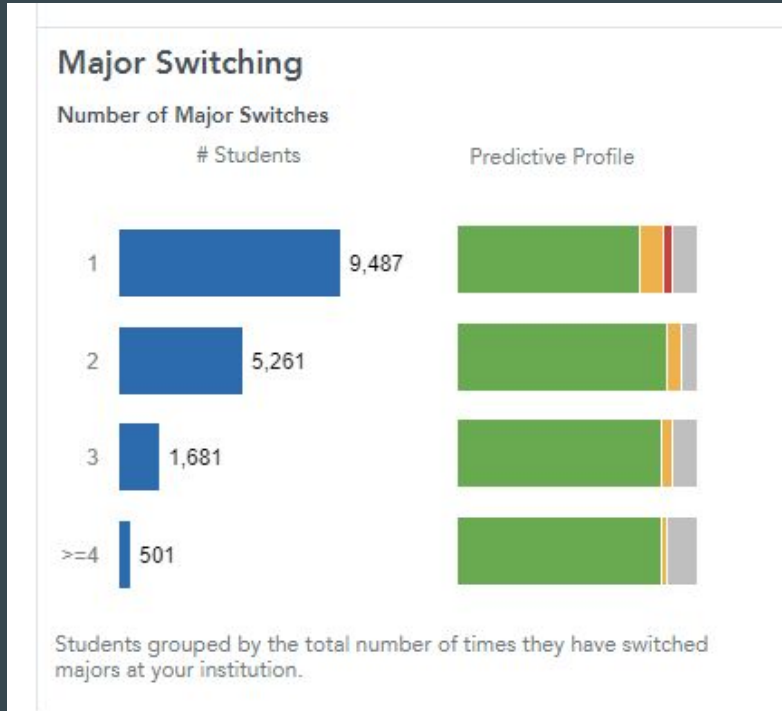
Students grouped by the total number of times they have withdrawn from courses at your institution.

Number of Repeats



Students grouped by the total number of times they have repeated courses at your institution.

Academic Progress



This graph shows the number of students who have switched majors. These numbers will include students who have moved from a pre-major to the major even if it is in the same program. Ex. pre-nursing to nursing.